

Datum: 19. August 2021

Seite: 1/4

Apply for a Zoom license via SWITCHhub

With the help of SWITCHhub (<https://store-unilu.switchhub.ch>), employees, lecturers and students can apply for a Zoom license.

SWITCHhub

You can log in to the SWITCHhub of the University of Lucerne (<https://store-unilu.switchhub.ch>) with your SWITCH edu-ID.

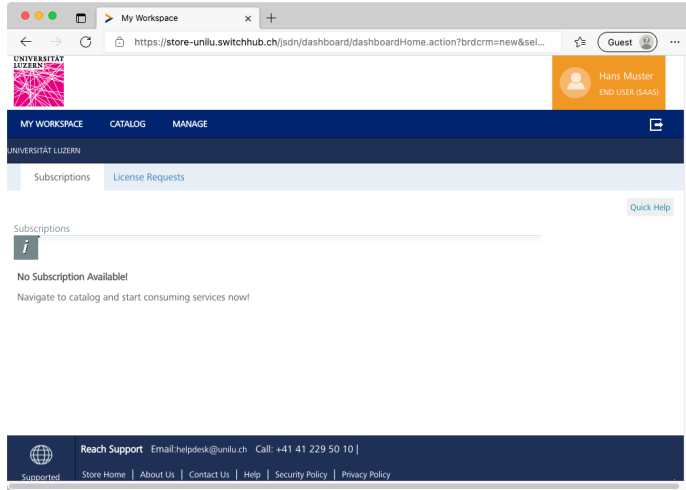
The image shows two browser windows. The top window displays the SWITCHhub website with the URL <https://store-unilu.switchhub.ch/cms/en/login>. A red arrow points to the 'Sign In' button in the top right corner. The bottom window shows the SWITCH edu-ID login page for 'Zoom for UNILU'. The page title is 'SWITCH edu-ID' and the subtitle is 'Anmeldung für: Zoom for UNILU'. The description of the service is 'Zoom for UNILU'. The login form includes fields for 'E-Mail:' (containing 'hans.muster@gmail.com') and 'Passwort:'. Below the fields are buttons for 'Konto erstellen' and 'Anmelden'. There are also links for 'Passwort vergessen?' and 'Optionen zum Schutz der persönlichen Daten'. The SWITCH logo is visible in the bottom right corner of the login page.

FROHBURGSTRASSE 3
P.O.BOX 4466
6002 LUCERNE

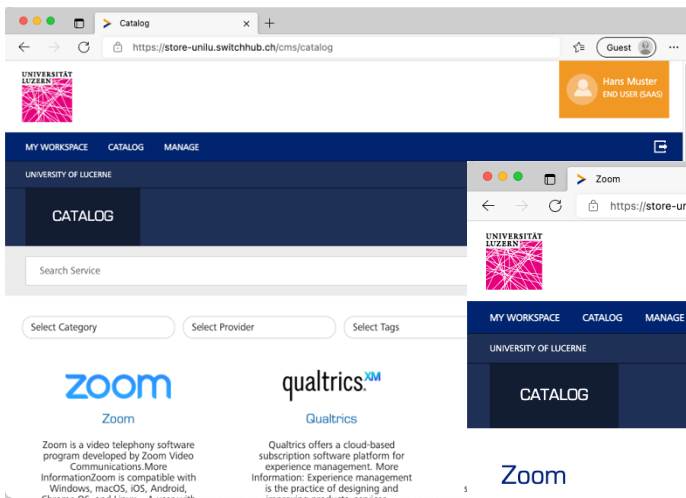
T +41 41 229 50 10
helpdesk@unilu.ch
www.unilu.ch/IT

SWITCHhub view

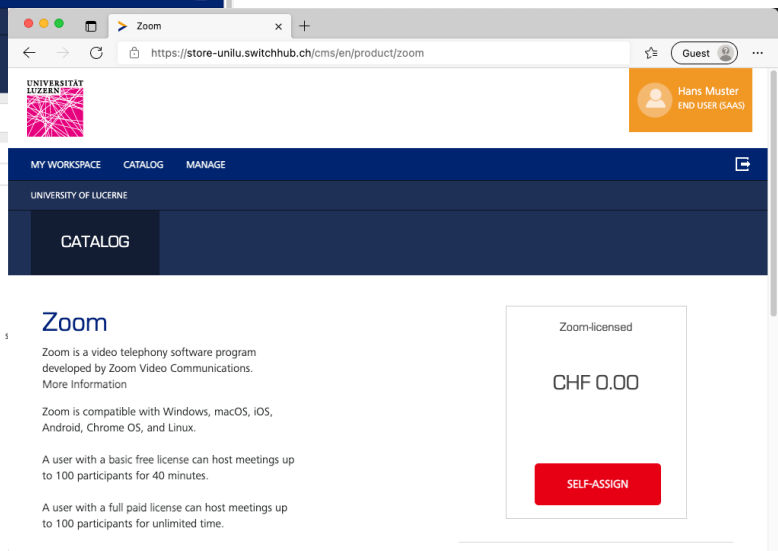
After login, active subscriptions (if available) are displayed.



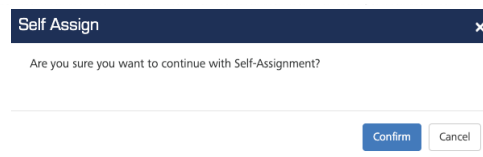
If you click on "CATALOG", all available services will be displayed. In the "CATALOG", click on Zoom and then ...



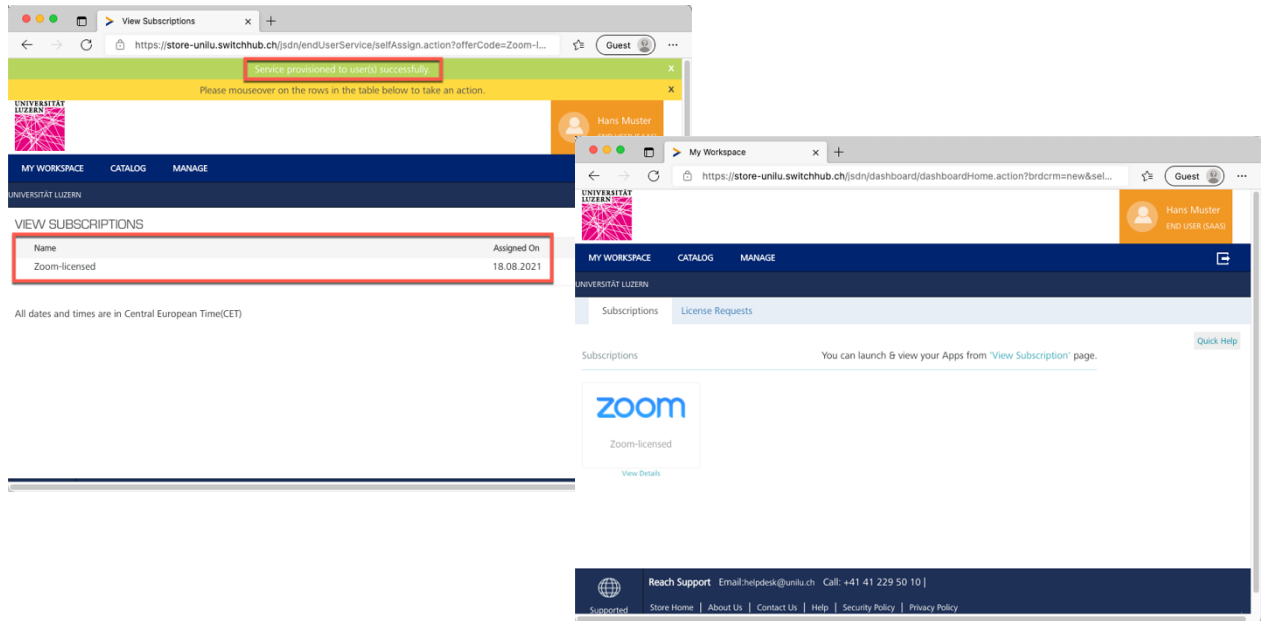
... click on the "SELF-ASSIGN" button



... and confirm the process with "Confirm"



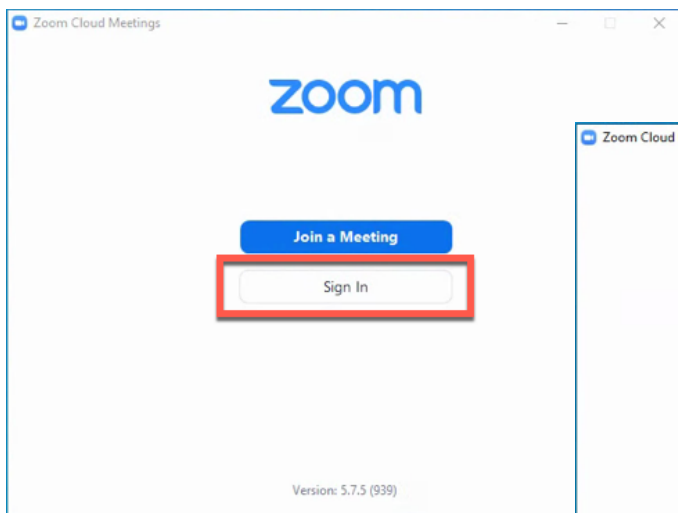
In this view, you will see that you have successfully obtained a Zoom license. If you click on "MY WORKSPACE", you will already see the active Zoom Subscription.



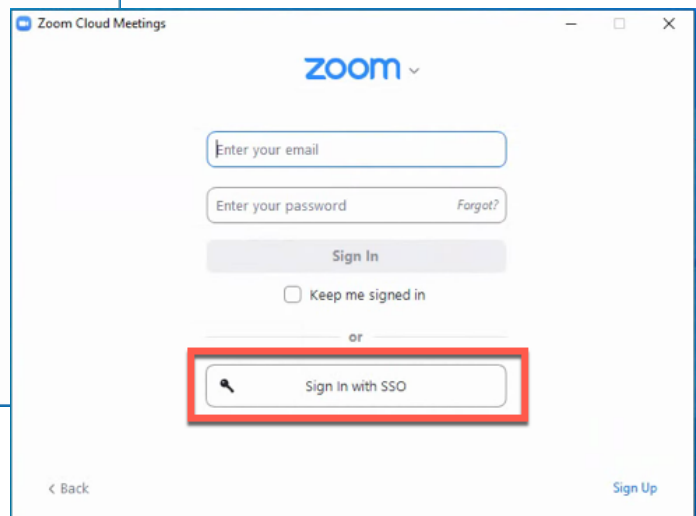
Login to Zoom Desktop Client with SWITCH edu-ID

You can download a Zoom client for Windows or macOS directly from Zoom at https://zoom.us/download#client_4meeting.

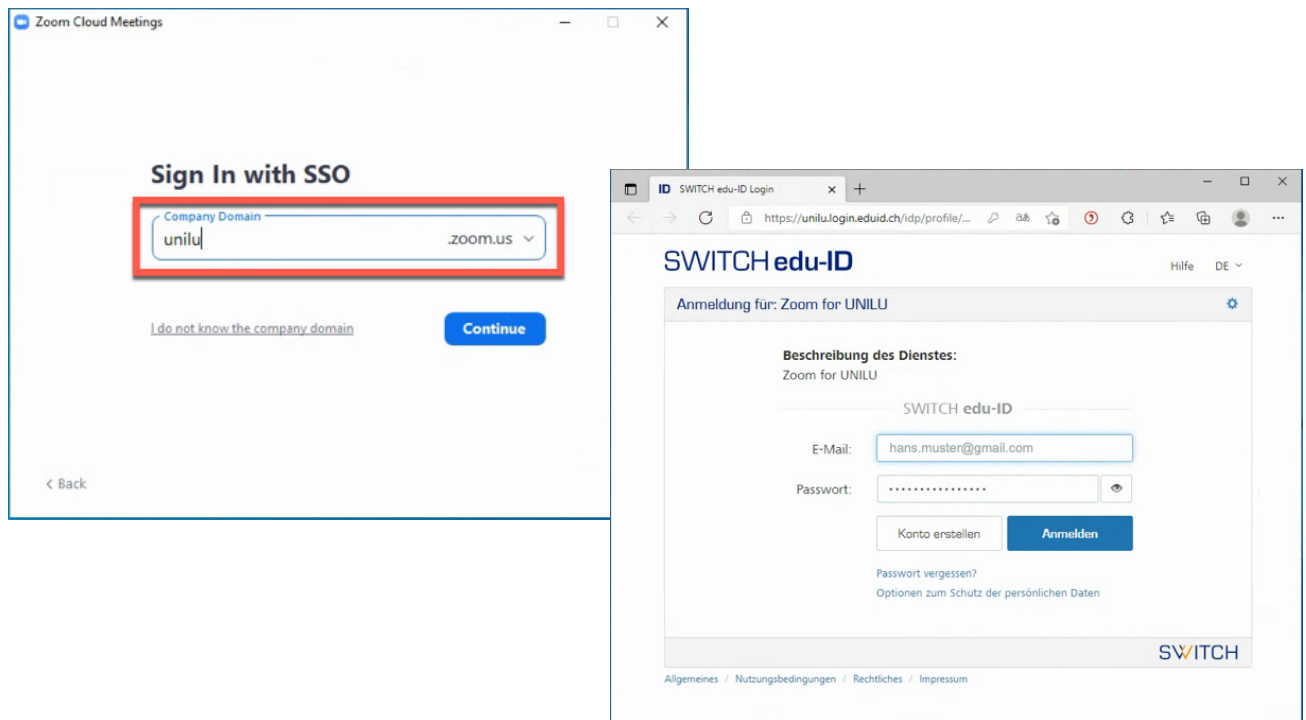
Start the Zoom Desktop Client, click on "Sign in" and then ...



... on «Sign In with SSO».

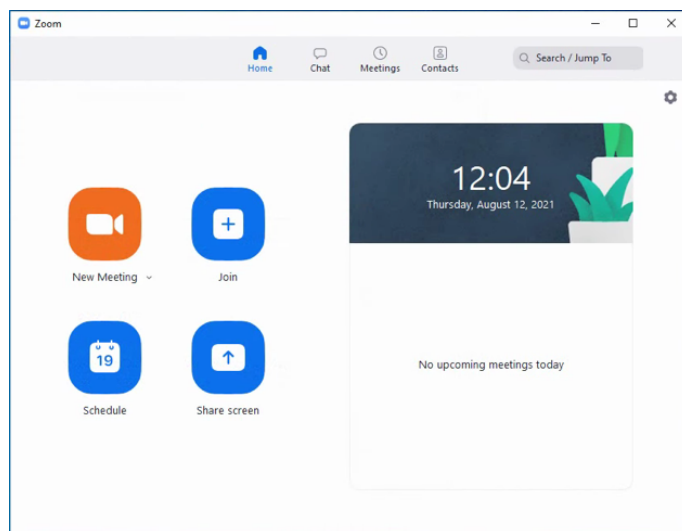


In the Company Domain field enter the value "unilu", then click the "Continue" button ...



... and then log in with your SWITCH edu-ID account.

After that, the Zoom Desktop Client will be launched with your Zoom account.



More information and support

For more information and support on Zoom, please visit the homepage of the University of Lucerne (<https://www.unilu.ch/universitaet/dienste/lehre/zentrum-lehre/zoom/>).