



# DECISION TREE MOBILITY

## ASSESSING THE NECESSITY OF PARTICIPATION

- How important is the occasion for me?
- Do I really have time for it?
- Do I have something to contribute?
- What will I miss if I don't participate?
- How unique is the occasion?
- How many people in my group will take part?

## PARTICIPATION

### CAN I PARTICIPATE VIRTUALLY?

- What activities will I be involved in during the event?  
Will I have an active or passive role?
- What added value does in-person participation bring?
- What savings (time, costs, CO<sub>2</sub>) result from virtual participation?

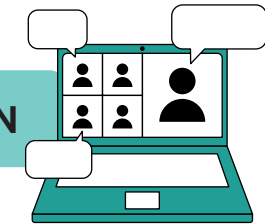
NO

### CAN I GET THERE BY PUBLIC TRANSPORT?

- Can public transport be used for the distance travelled?
  - ▶ Flying may only be chosen if the travel time by public transport exceeds 7 hours (see [information sheet on expenses](#) and [list of destinations](#)).
  - ▶ Additional internal faculty guidelines may apply!
- Can I use my time on the train productively?
- What savings (time, costs, CO<sub>2</sub>) result from travelling by train?
  - ▶ [Chronotrains](#): Map with train journey times
  - ▶ [Ecopassenger](#): Comparison of the environmental impact of different modes of transport

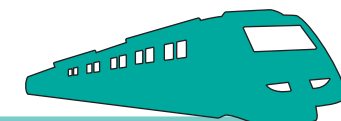
YES

### 1 VIRTUAL PARTICIPATION



YES

### 2 TRAVEL WITH CLIMATE-FRIENDLY TRANSPORTATION



NO

### 3 FLYING AS CLIMATE-FRIENDLY AS POSSIBLE



- Fly economy class (see expense regulations)
- Prefer direct flights
- Travel part of the way by public transport
- Consider CO<sub>2</sub>-efficient airlines and flight connections ([Airline Ranking](#), [GoogleFlights](#))

## TIPS

- 1
  - The IT support team at the University of Lucerne is here to help with any issues or questions.
  - For hybrid and virtual formats, meeting owls are available that automatically focus on the person speaking in the room.

- 2
  - [SimpleTrain](#) makes it easy to book train journeys.
  - First-class travel abroad is possible after consultation with faculty management (see [expense regulations](#)).
  - An [Interrail pass](#) lets you combine trips to different destinations at low cost.

- 3
  - Combine several trips if possible.
  - Where possible, combine business trips with a visit to a nearby partner university. More information is available from the faculty's mobility office.